

HYPER FILTRATION MEDIA

TURBIDEX™



Hyper Filtration Media

Turbidex's enhanced ability to remove sediment results in superior water clarity and down stream cost savings on chemicals, filter cartridges, membrane cleaning, membrane life, etc.

Higher Flow Rates

Because of its high porosity and hydrophylic nature, Turbidex can typically operate at higher service flow rates than multimedia or conventional sand filters.

Water Savings

Customers that switch to Turbidex report that the pressure drops across the system decrease substantially. This results in longer service runs and less frequency between backwashes.

Easier to Inventory and Install

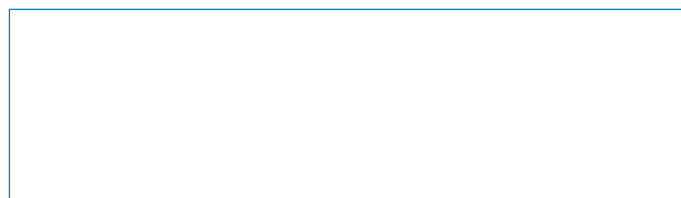
Turbidex is less expensive to ship because it only weighs 50 lbs. per cubic foot. With one part number and one media it is much simpler to order, inventory and install.

For sediment filtration that makes the grade.

Turbidex is a unique natural ore called clinoptilolite that has many outstanding advantages over common granular filter sands. Turbidex's enhanced ability to remove

sediment results in superior water clarity and down stream cost savings on chemicals, filter cartridges, membrane cleaning, membrane life...

Because of its high porosity and hydrophylic nature, Turbidex can typically operate at higher service flow rates than multimedia or conventional sand filters.



ADVANTAGES

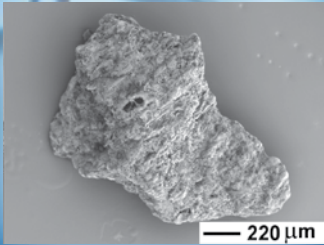
- Deep bed filtration results in superior water quality and reduces the load on downstream equipment.
- High sediment removal capacity results in longer filter runs, with a substantial savings in backwash water and time out of service.
- High service flow rates result in lower equipment costs and a savings in space.
- Reduced shipping cost due to lighter weight/cu.ft.
- Replacement of multimedia with Turbidex in existing installations may increase filter capacity.
- Turbidex is an all-natural, environmentally safe product.

PHYSICAL PROPERTIES

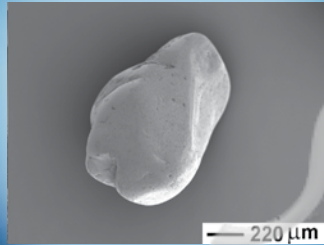
- Color: Light tan to near white
- Dry Bulk Density: 50 lbs/cu. ft
- Specific Gravity: 2.2 g/cc
- Mesh Size: 14x30
- Effective Size: 0.55mm
- Uniformity Coefficient: 1.8
- Hardness: 4-5 (Mohs Scale)

CONDITIONS FOR OPERATION

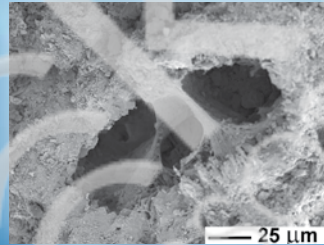
- Water pH: Wide range
- Max. Water Temp.: 140°F/60°C
- Bed Depth: 24-36 inches
- Freeboard: 50% of bed depth
- Backwash Flow Rate: 15-20 gpm/sq.ft.
- Backwash Bed Expansion: 30-40% of bed depth
- Service Flow Rate: 12-20 gpm/sq.ft.
- Local conditions may require lower flow rates
- A gravel support bed is required
- Allow bed to saturate before initial backwash



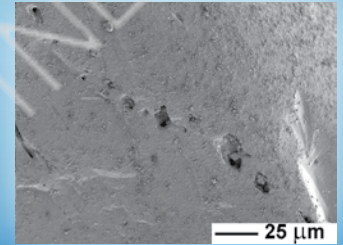
Zeolere 30 Grade 0.8 - 1.4mm.



Standard silica sand 0.8 - 1.4mm.



Zeolere 30 Grade 0.8 - 1.4mm.



Standard silica sand 0.8 - 1.4mm.

For sediment filtration that makes the grade.

COMPARISON TABLE CLACK VALVE BASED FILTER UNITS

SAND	TURBIDEX					Financial benefit
	12m/u	20m/h		30m/h (nom)		
WS1 TC	20L Q-09.35	WS1 TC	20L Q-09.35	WS1 TC	20L Q-09.35	/
	30L Q-10.54	WS1 TC	20L Q-09.35	WS1 TC	20L Q-09.35	
	60L Q-13.54	WS1 TC	25L Q-10.54	WS1 TC	20L Q-09.35	
	80L C-14.65	WS1 TC	60L Q-13;54	WS1 TC	25L Q-10,44	
	100L C-16.65	WS1 TC	60L Q-13.54	WS1 TC	30L Q-10,54	
WS1.5 EI	150L C-18.65	WS1 TC	80L Q-14.65	WS1 TC	60L Q-13.54	50% - 65%
WS1.5 EI	200L C-21.60	WS1 TC	100L C-16.65	WS1 TC	80L Q-14.65	
WS1.5 EI	250L C-24.69	WS1.25 TC	150L C-18.65	WS1 TC	100L C-16.65	
WS2 EI	150L C-18.65	WS1 TC	80L Q-14.65	WS1 TC	60L Q-13;54	65% - 70%
WS2 EI	200L C-21.60	WS1 TC	100L C-16.65	WS1 TC	80L Q-14.65	
WS2 EI	250L C-24.69	WS1.25 TC	150L C-18.65	WS1 TC	100L C-16,65	
WS2 EI	400L C-30.72	WS1.5 EI	250L C-24.69	WS1.5 EI	200L C-21.60	
WS2QC TM EI	250L C-24.69	WS1.25 TC	150L C-18.65	WS1 TC	100L C-16.65	30% - 40%
WS2QC TM EI	400L C-30.72	WS1.5 TC	250L C-24.69	WS1.5 EI	200L C-21.60	
WS2QC TM EI	600L C-36.72	WS2 EI	400L C-30.72	WS1.5 EI	250L C-24.69	
WS3 TM	600L C-36.78	WS2 EI	400L C-30.72	WS1.5 EI	250L C-24.69	50% - 55%
WS3 TM	800L C-42.78	WS3	600L C-36.72	WS2 EI	400L C-30.72	10% - 55%
WS3 TM	1000L C-48.82	WS3	600L C-36.72	WS2 EI	400L C-30.72	55%
WS2QC SM EI	250L C-24.69	WS1.25 TC	150L C-18.65	WS1 TC	100L C-16.65	45% - 55%
WS2QC SM EI	400L C-30.72	WS1.5 EI	250L C-24.69	WS1.5 EI	200L C-21.60	
WS2QC SM EI	600L C-36.72	WS2 EI	400L C-30.72	WS1.5 EI	250L C-24,69	
WS3 SM	600L C-36.78	WS2 EI	400L C-30.72	WS1.5 EI	250L C-24.69	30% - 65%
WS3 SM	800L C-42.78	WS3 TM	600L C-36.72	WS2 EI	400L C-30.72	
WS3 SM	1000L C-48.82	WS3 TM	600L C-36.72	WS2 EI	400L C-30.72	